

COMPUSPOT 825HD

Heavy Duty Spot Welder - Liquid Cooled

**APPROVED AND RECOMMENDED BY
MAJOR CAR MANUFACTURERS**

Liquid cooled welding cables and electrode tips.

Maximum 14,000 AMPS output power at the tips
maintained by automatic power compensation.

Clamping force of over 1416lbf at 123psi.
(630daN at 8,5bar)

Advanced Inverter technology.

Verification of the welding spot quality
and printing of the repair results.

EMF shielded cables optional.

Includes 5 ½ piece electrode arm set
and retractable pulley support.

NEW HIGH DEFINITION GRAPHIC DISPLAY*

7 inch LCD screen.

Bright pictograms for better resolution.

Easy reading and selection.

English, French, Italian, Dutch and
German Language selections.

Programmable for OEM procedures or
custom settings.

Memory card slot, printer connector and
USB port for data import/export.

*Original CompuSpot Model 800 may be updated by
simply changing the display panel and the microcontroller



AMH®



No. Model (208-230V): 28.CPS.828 No. Model (380-415V): 28.CPS.829

State of the art technology at your finger tips

COMPUSPOT 825HD

Power in action...

Dual Action Trigger Switch for Weld Pressure and Current

1. The 1st stage closes the clamp and allows precise positioning
2. The 2nd stage activates the weld current

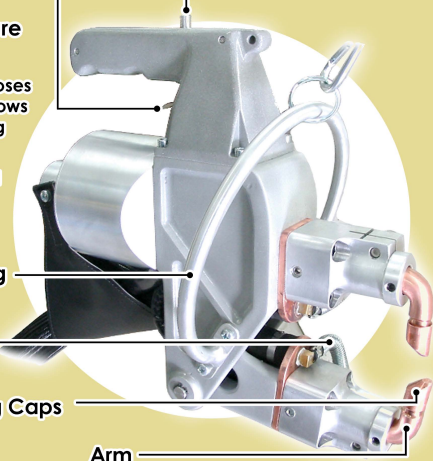
Positioning Ring

Cooling Pipe

Welding Caps

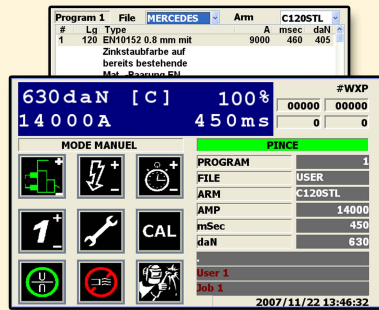
Arm

Increased Jaw Opening



Maximum Maneuverability with:
Clamp and cable support;
Wide range of positions;
Easy access to the workpiece

Control panel display



Easy to operate with:

- Pre-programmed tool selections
- Memory slots
- LCD display
- Language selection keypad
- Arrows for quick adjustment of power and weld time
- Separate switches for disabling power and/or the cooling system
- On board system diagnostics

Technical information

Nominal input power.....	208-230V / 380-415V 3-Phase
Fuse or breaker.....	70A / 40A Slow blow
Secondary short-circuit maximum current (RMS).....	14,000A
Frequency.....	50Hz / 60Hz
Welding frequency.....	2000Hz
Welding cable length.....	2,5m (8')
Cooling system (cable, arms and cap).....	Liquid
Nominal operating temperature.....	30°C (86°F)
Tip pressure at 8,5bar (123psi).....	630 daN(1416lbf) (120mm arms set)
Clamp weight (without arms).....	7kg (15lb)
Weight.....	195kg (430lb)

Accessories

- 120mm Straight arms set (04.PS.80.12)
- 330mm 1/2 Offset arms set (04.PS.80.33)
- 330mm 1/2 Offset arm (04.PS.80.32)
- 330mm Dog noze arms set (04.PS.80.34)
- 470mm Straight arms set (04.PS.80.47)
- 230mm Crocodile type arms set (04.PS.80.21)
- 470mm Full Offset arms set (04.PS.80.41) - **Optional**
- Fender electrodes set (04.PS.88.22)

Complete single side welding and dent pulling package included



AMH Canada Ltd 391, rue Saint-Jean-Baptiste Est, Rimouski (Québec) Canada G5L 1Z2

EUROPE Tel: ++33 616 995 408

USA Tel: (910) 371-9313

Fax: (910) 371-9417

CANADA or other countries Tel: (418) 724-4105

Fax: (418) 722-6108

Web site: www.amh.ca

Email: sales.amh@amh.ca